

Map 3.5 Waikato Region - Geology

Lithology

- Alluvium
- Alternating sandstone/siltstone
- Andesite, dacite and diorite
- Basalt
- Engineering Soils
- Greywacke, argillite and chert
- Ignimbrite and tuff
- Laharic colluvium
- Limestone
- Mudstone
- Peat
- Rhyolite
- Sandstone
- Water

Projection:
New Zealand Map Grid
(NZMG)

Datum:
Geodetic Datum 1949

Original Data Sources:

geol_units
QMap Geological Data
(Auckland and Waikato)

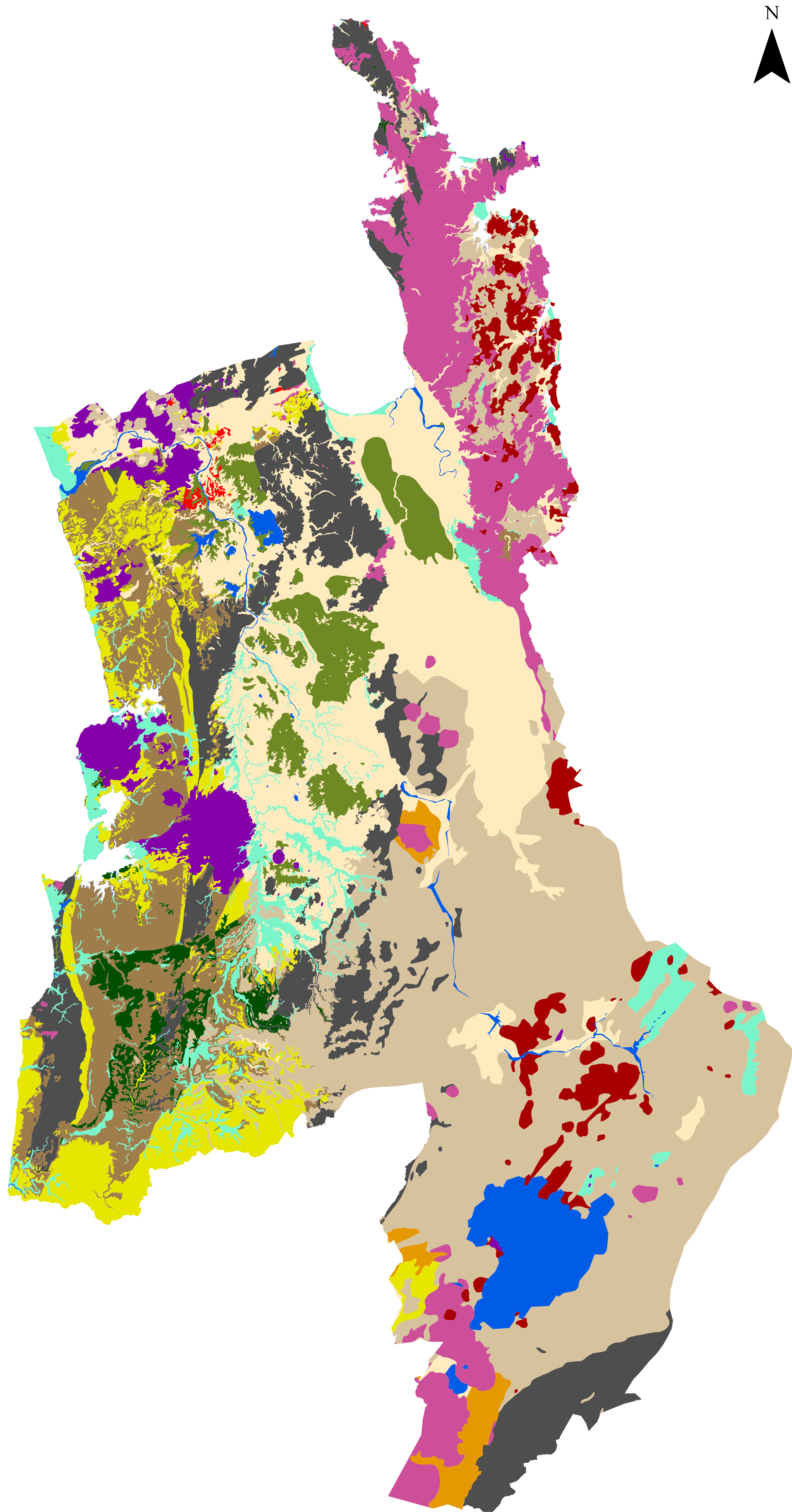
© Institute of Geological
and Nuclear Sciences
(2001)

New Zealand Geology
(nzgeology) Data

© Institute of Geological
and Nuclear Sciences

Created By: Renée Schicker
Date: 18 February 2010

Contact:
renee_schicker@hotmail.com



0 10 20 30 40 50 Km